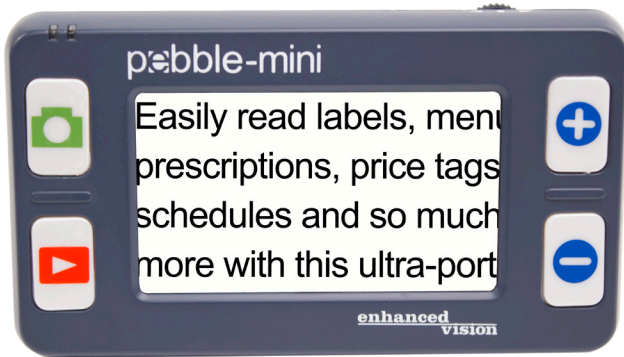


**enhanced**  
**vision**

# pebble-mini™



Screen Size

3"

## Users Manual

---

Congratulations on your purchase of the Pebble-mini from Enhanced Vision. The Pebble-mini is a handheld electronic video magnifier that you can take anywhere. Weighing less than 4 ounces, and includes both near-viewing and table reading modes. Small enough to fit in your pocket or purse, the Pebble-mini is the ideal companion to provide magnification on the go.

With the Pebble-mini, you can easily read bank statements, coupons, prescriptions, restaurant menus, or sign checks - anywhere you need portable magnification. The Pebble-mini provides hours of low vision enhancement.

Featuring a built-in 3" LCD screen, the Pebble-mini allows you to magnify images up to 10 times. A built in Freeze-Frame feature allows you to capture any still image and adjust magnification and change color. Seven different viewing modes allow you to choose alternate color combinations based on your personal preference.

The Pebble-mini includes a convenient carrying case, a built-in neck strap, a rechargeable battery and an integrated battery charger. Pebble-mini comes with a 2 year warranty.

---

## FCC COMPLIANCE NOTICE

---

This device complies with Part 15 of the FCC Rules. Operation is subject to the following two conditions: (1) This device may not cause harmful interference, and (2) this device must accept any interference received, including interference that may cause undesired operation.

This equipment has been tested and found to comply with the limits for a Class B digital device, pursuant to Part 15 of the FCC Rules. These limits are designed to provide reasonable protection against harmful interference in a residential installation. This equipment generates, uses, and can radiate radio frequency energy and, if not installed and used in accordance with the instructions, may cause harmful interference to radio communications. However, there is no guarantee that interference will not occur in a particular installation. If this equipment does cause harmful interference to radio or television reception, which can be determined by turning the equipment off and on, the user is encouraged to try to correct the interference by one or more of the following measures:

- Reorient or relocate the receiving antenna.
- Increase the separation between the equipment and receiver.
- Connect the equipment into an outlet on a circuit different from that to which the receiver is connected.
- Consult the dealer or an experienced radio/TV technician for help.

Unauthorized changes or modification to this system can void the user's authority to operate this equipment.

If your Low Vision device has an option to connect to a TV, it must be used with shielded interface cables in order to meet FCC emissions limits for Class B digital devices. It is the responsibility of the user to use the shielded interface cables supplied with the equipment.

---

## **Chapter 1: Safety Precautions**

General Guidelines .....	6
Transportation .....	7
Care & Maintenance .....	7

## **Chapter 2: Package Contents & Controls**

Package Contents & Controls .....	8-9
Accessories .....	8-9

## **Chapter 3: Using the Pebble-mini**

Power Options .....	10
Connecting the Power Supply .....	11
Turning the Power On/Off .....	12
Selecting Viewing Modes .....	13
Capturing an Image .....	14
Recalling an Image .....	15
Deleting a Saved Image .....	15
Deleting All Saved Images .....	15

## **Chapter 4: Using the Menu**

Menu 1 (Brightness, Light, and Key Click) .....	16
Menu 2 (Color Modes) .....	17
Menu 3 (Audio, Restore, and Firmware Version) .....	18
Menu 4 & 5 (Changing Languages) .....	19

---

<b>Chapter 5: Connecting to your PC</b>	
Uploading Images to Your PC .....	20
Updating your Pebble-mini firmware .....	21
<b>Chapter 6: Charging &amp; Using Battery</b>	
Using Rechargeable Battery .....	22
Replacing the Battery.....	23
Battery Charging Procedure .....	23
Battery Charger Status Indicators .....	24
<b>Chapter 7: Tips for using the Pebble-mini</b>	
Attaching the Neck Strap.....	25
Using the Carrying Case .....	25
<b>Chapter 9: Troubleshooting</b>	
Troubleshooting .....	26-27
<b>Chapter 10: Specifications</b>	
Specifications .....	28-29
<b>Chapter 11: Warranty Information</b>	
Warranty Information .....	30-31
<b>Chapter 12: Other Enhanced Vision Products</b>	
Other Enhanced Vision Products .....	32-33

---

## SAFETY PRECAUTIONS

---

For your safety and to obtain the most benefit and life from the Pebble-mini, please read these important safety precautions carefully.

### **General guidelines for use:**

- ▶ Follow all warnings, cautions, and instructions marked on the product.
- ▶ Use only Enhanced Vision provided battery.  
Using other battery will void your warranty and could cause damage to the product and/or pose personal safety risk.
- ▶ Use care when using the Pebble-mini outdoors – it should NOT be exposed to extreme or rapid changes in temperature or humidity.
- ▶ Do not place the Pebble-mini near a radiator, heater, or areas exposed to long hours of direct sunlight.
- ▶ Prevent the risk of electrical shock by NOT attempting to disassemble the unit. Please refer all service to an authorized repair facility.
- ▶ Do not use the Pebble-mini in, near, or around water. The Pebble-mini is not designed to offer protection against contact with liquids of any kind.
- ▶ Do not use the Pebble-mini during an electrical storm, lightning, or other severe weather.
- ▶ Do not use the Pebble-mini near open flames, flammable materials, or liquids.

---

## **Transportation:**

- ▶ Pebble-mini comes with a convenient carrying case for transport. To prevent the unit from being accidentally dropped and damaged, always return the Pebble-mini to the carrying case while not in use.
- ▶ While in use, securely attach and use the neck strap to avoid damage to the Pebble-mini caused by an accidental drop.

## **Care & Maintenance:**

- ▶ If needed, clean the surface of the Pebble-mini with a soft damp cloth or an electro static dusting wipe. **DO NOT** use liquid cleaners on the plastic surface. No additional methods of sterilization or cleaning are recommended or required.

## **Susceptibility to Interference:**

There may be temporary performance degradation of the Pebble-mini when subjected to a strong magnetic and/or radio-frequency field, electrostatic discharge or transient electrical noise. An electrostatic discharge (caused by static electricity) may cause image distortion. If this happens, switch the unit off and try moving the unit to a different location.

---

## PACKAGE CONTENTS & CONTROLS

---

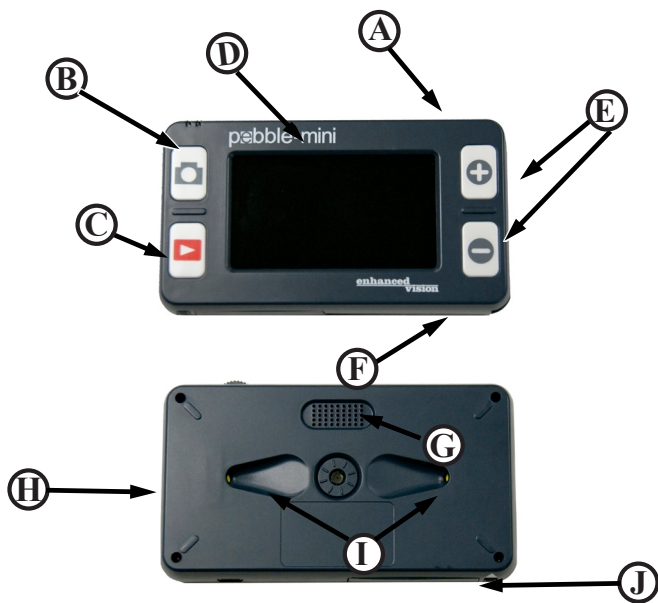
Please refer to the illustrations on the next page to identify the package contents and controls of your Pebble-mini. In addition to this users guide, you will find the following items inside the box:

1. **Pebble-mini (Battery included inside)**
2. **Neck Strap**
3. **Carrying Case**
4. **USB Cable**
5. **AC Adapter Power Supply With Interchangeable AC plugs**
6. **Lens Cloth**
7. **Pebble-mini Stand**

Please note the locations of the following controls on your Pebble-mini:

- A. **Scroll Wheel**
- B. **Capture Button**
- C. **Recall**
- D. **LCD Screen**
- E. **Zoom (+) and Zoom (-) Buttons**
- F. **USB Input**
- G. **Speaker**
- H. **Power Button (On/Off)**
- I. **LED Lighting**
- J. **Battery Compartment (Integrated Charger)**





### Power Options

Your Pebble-mini can be powered using:

- ▶ The included AC adapter power supply and USB cable.
- ▶ Rechargeable Battery (installed)

When using the Pebble-mini for the first time, please power the unit using the included AC adapter power supply and USB cable. This will ensure that the rechargeable battery can fully charge, even while the Pebble-mini is in operation.

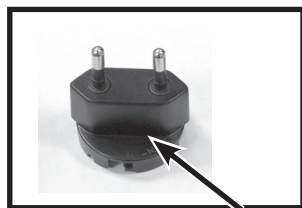


*Figure 1*

### Power Supply

1) Included within your Pebble-mini magnifier box is a main power supply and multiple inserts for the outlets of various countries.

2) To install choose the correct insert for your country.



*Figure 2*



*Figure 3*

---

## Connecting the AC adaptor power supply

Use the following procedure to connect the Pebble-mini to the AC adaptor power supply:

1) Connect the included USB cable to the USB input port on the side of the Pebble-mini

(See *Figure 1*).



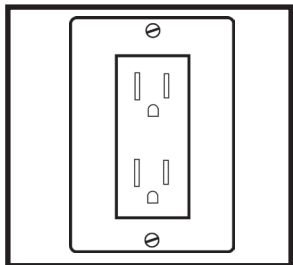
*Figure 1*

2) Connect the remaining end of the USB cable to the AC adaptor power supply. (See *Figure 2*).



*Figure 2*

3) Find an available AC wall outlet and plug in your AC adaptor power supply (See *Figure 3*).



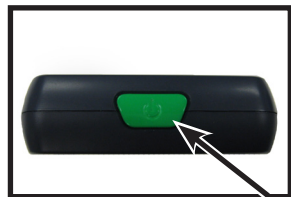
*Figure 3*

---

## Turning the Power On/Off

Use the following procedure to turn the power of your Pebble-mini On or Off:

- 1) Find the Green, recessed POWER button located on the left side edge of your Pebble-mini.  
(See *Figure 1*)



*Figure 1*

- 2) Press the Green POWER button.

To turn of the Pebble-mini, simply press and release the Green POWER button.

*Note: A short, confirmation tone (“ding”) will be heard when the unit is powered On.*

## Adjusting the Image Size

Use the following procedure to adjust the displayed magnification (size) of the LCD image.

- 1) Locate the ZOOM (+) / ZOOM (-) Button located on the right face of your Pebble-mini  
(See *Figure 2*).



*Figure 2*

- 2) Press the ZOOM (+) to increase the magnification size or Zoom (-) to decrease the magnification size on the LCD.

## Selecting the Viewing Mode:

Use the following procedure to select the viewing mode of the image on the LCD

1) Scroll with the Scroll wheel (See Figure 1) to continuously cycle through the 4 pre-set viewing modes and the 3 favorite viewing modes. To change your favorite viewing mode to any of the 28 available modes, follow instructions on page 16. Pressing the Scroll wheel down will revert to the normal mode bypassing the need to cycle all 7 modes.

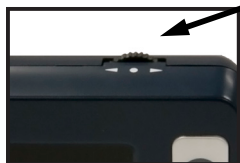
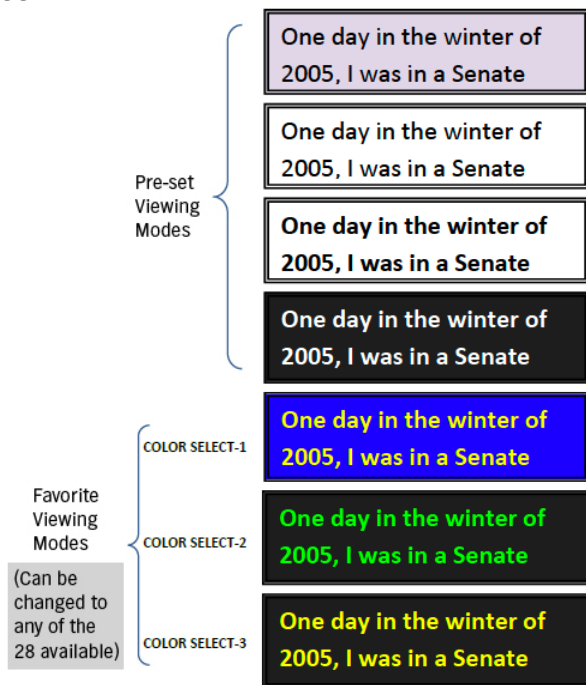


Figure 1



---

## Capturing an Image (Snapshot function)

If desired, you can take and store a snapshot or freeze an image on the display. You can also adjust the size and color modes after freezing an image.

1) Press the CAPTURE button to capture the image (See Figure 1).



*Figure 1*

Pebble-mini will sound a short confirmation tone (“shutter”) when the image is captured.

2) Press the CAPTURE button again to save your image and exit to clear the image and resume normal operation (you will hear a “click” to confirm the save.)

*Note: Lights are off after first CAPTURE is being processed, they will turn back on after second CAPTURE is being processed.*

---

## Recalling an Image:

Your Pebble-mini has the option to recall an image that was previously saved.

- 1) Find the RECALL button located on your Pebble-mini (See Figure 1).
- 2) Press the RECALL button and the last image that was taken will appear on the display. You can use the scroll wheel to scroll through all saved images.



Figure 1

## Deleting a Saved Image:

- 1) To delete a saved image, press the RECALL button and scroll with the scroll wheel to the image you would like to delete.
- 2) Press the RECALL button again and a menu will show on the display. (See figure 2)
- 3) To delete the image, press the ZOOM (-) button and to cancel the deletion press the ZOOM (+) button. To return to live mode, press CAPTURE.



Figure 2

## Deleting ALL Saved Images:

- 1) To delete all saved images, press the RECALL button once to show image on screen.
- 2) Press and hold the RECALL and ZOOM (-) button simultaneously until a menu shows up with DELETE ALL. (See figure 3)
- 3) To delete ALL the images, press the ZOOM (-) button and to cancel the deletion press the ZOOM (+) button.
- 4) After deleting all images you will receive a NO FILES message on screen and you will return to live mode after 2 seconds.



Figure 3

### Using the Menu 1: Brightness, Lights, and Key Click

To enter Menu 1, press the  and  simultaneously.

#### Adjusting the Brightness:

- 1) Enter Menu 1 (See Figure 1)
- 2) With the BRIGHTNESS selected, press the ZOOM (+) or ZOOM (-) to increase or decrease the brightness.
- 3) There will be a 10 second timeout or press CAPTURE to exit the menu and save your Brightness setting.



Figure 1

#### Turning On/Off the LIGHT

- 1) Enter Menu 1 (See Figure 1)
- 2) Scroll with the scroll wheel to the LIGHT ON. With the LIGHT ON selected, press the ZOOM (+) to turn lights ON or ZOOM (-) to turn lights OFF.
- 3) There will be a 10 second timeout or press CAPTURE to exit the menu and save your Light settings.

#### Turning On/Off Key Click

- 1) Enter Menu 1
- 2) Scroll with the scroll wheel to the KEY CLICK ON. With the KEY CLICK ON selected, press the ZOOM (+) to turn key click ON or ZOOM (-) to turn key click off.
- 3) There will be a 10 second timeout or press CAPTURE to exit the menu and save your Key Click settings.



---

## Entering Menu 2: Color Modes



To enter Menu 2, press the  and  simultaneously, then scroll one click with the scroll wheel below “KEY CLICK ON”.

### Changing the Favorite Color Mode:

Your Pebble-mini has 4 set viewing modes (full-color, black & white, enhanced positive, and enhanced negative) and 3 that can be changed to any of the 28 available color modes. Use the following procedure to select between the 28 available color modes:

1) Enter Menu 2  
(See Figure 1)

2) With a COLOR SELECT highlighted, press the ZOOM (+) to enter the color select mode.



Figure 1

3) Use the scroll wheel to change the favorite color modes to any of the 28 that are available.

4) When finished, press the ZOOM (+) to assign color mode.

5) There will be a 10 second timeout or press CAPTURE to exit the menu.

---

## Entering Menu 3: Audio, Restore, and Firmware Revision

To enter Menu 3, press the  and  simultaneously, then scroll with the scroll wheel one click below “COLOR SELECT”.

### Turning On/Off the Audio:

By default, your Pebble-mini has audible sounds while performing certain functions.

To disable this feature, use the following instructions:

1) Enter Menu 3

(See Figure 1)

2) With AUDIO ON highlighted,

press the ZOOM (+) or ZOOM (-) to activate or deactivate this function.

3) There will be a 10 second timeout or press CAPTURE to exit the menu.



Figure 1

### Restore to Factory Settings:

1) Enter Menu 3 (See Figure 1)

2) With RESTORE SETTINGS highlighted, press and hold the ZOOM (+) button for 3 seconds.

3) A message “RESTORED” will appear on screen and the Pebble-mini will return to live mode after 2 seconds.

### Firmware Version:

1) Enter Menu 3 (See Figure 1)

2) With FIRMWARE VERSION highlighted, press the ZOOM (+) button.

3) A message will appear on screen with the revision No.

4) With NO highlighted, press the ZOOM (+) to exit and power off unit. Pressing and holding the CAPTURE will exit the Menu without powering unit off.

---

## Entering Menu 4 and 5: Change Languages

To enter Menu 4, press the  and  simultaneously then scroll one click with the scroll wheel below “FIRMWARE VERSION” to enter Menu 4 & 5.

### Changing the Language:

There are 6 supported languages for the Pebble-mini: English, French, Italian, Spanish, German, and Japanese. Use the following directions to change the language of your Pebble-mini.

- 1) Enter Menu 4 (See *Figure 1*) or Menu 5 (See *Figure 2*)
- 2) Use the scroll wheel to highlight the preferred language and press the ZOOM (+) to activate the requested language.
- 3) There will be a 10 second timeout or press CAPTURE to exit the menu.



*Figure 1*



*Figure 2*

### Uploading Images to your PC:

Your Pebble-mini has the option to upload all your stored images to your PC. This allows you to store or share these images. Follow the instructions to upload your saved images to the PC.

1) Plug in the USB cable into the Pebble-mini (See *Figure 1*) and the opposite end into the PC (See *Figure 2*)



*Figure 1*

2) Your Pebble-mini will register as a normal USB-storage device with the drive name: Pebble.

3) Double click the Pebble drive.

4) With the Pebble drive open double click on the DCIM folder.



*Figure 2*

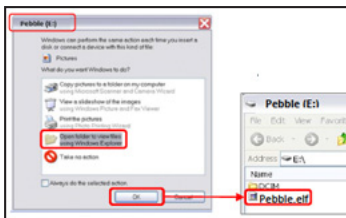
5) Drag the images to your desktop or the desired location.

---

## Updating your Firmware:

There will be periodic updates that will be available to you through our website. To see which version you are currently running, follow the instructions on *page 18* (Firmware Version). Compare your current firmware with the most current firmware. (Browse SUPPORT under [www.enhancedvision.com](http://www.enhancedvision.com) to find the most current firmware.) If you are running an older version and would like to update it, follow instructions below:

- 1) Download the most current version to your PC.
- 2) Plug in the Pebble-mini to your PC using the USB cable.
- 3) Your Pebble-mini will register as a normal storage device.
- 4) Copy the new firmware file downloaded from the internet to the Pebble drive by dragging file “Pebble\_M.elf” to the Pebble drive. (See *Figure 1*)
- 5) Unplug your Pebble-mini unit from the PC and restart the Unit. (Power off and then power on).
- 6) After unit is powered back on, navigate to Menu 3 and select FIRMWARE VERSION by pressing ZOOM (+).
- 7) When UPDATE FIRMWARE YES/NO appears, (See *Figure 2*) navigate with the scroll wheel to YES and press (+) to activate. When update is complete the unit shall display a message and wait for the user to power off the unit. Unit will power on with new firmware. Old firmware will load if user selects NO.



*Figure 1*



*Figure 2*

### Using Rechargeable Battery

The user does not have to remove the battery for normal operation. If the battery is discharged completely, the user must connect the AC adapter and charge the unit for a minimum of 15 minutes in order to use the unit while charging. Once the unit has charged the battery enough, then the user can continue to use the unit while the unit is being charged. In the event that the battery has to be replaced, the user must power off the unit, push the battery latch, the battery door will pop open. The user can remove the old battery and insert the new battery and close battery door.

### Important Points When Using Battery Power

- ▶ The Pebble-mini should ONLY be used with the included battery. Using other battery will void the unit warranty. Contact Enhanced Vision for replacements.
- ▶ Using new battery, your Pebble-mini should last about 2 – 3 hours when fully charged depending on the brightness level. The total usage time will gradually reduce with subsequent charges.

---

## Replacing the Battery

1) Locate the battery compartment door  
(See Figure 1)

2) Using your fingernail, press the latch to the bottom as shown in Figure 1 by the arrow. (See Figure 1)

3) Open battery door and remove the battery. (See Figure 2)

4) Insert new battery. Press and hold latch to the bottom and swing the door back until snapped close. Release the latch to lock battery door shut.



Figure 1



Figure 2

## Battery Charging Procedure

To charge the battery inside your Pebble-mini, simply connect the included AC adaptor as described on the bottom of *page 10*.

- If the battery is completely drained, the Pebble-mini will not turn on while charging. Connect the unit to the AC adaptor for 15 minutes prior to turning on the Pebble-mini.
- If the Pebble-mini battery is not completely drained, then you can continue to use your Pebble-mini while it is being charged using the AC adaptor and USB cable.
- When the Pebble-mini is plugged into a computer using the USB cable, the unit will charge but cannot be used at this time. Your Pebble-mini takes approximately 3.5 hours to fully charge. A fully charged battery should give you approximately 2 to 3 hours battery life depending on the brightness level.

**CAUTION:** Risk of explosion if battery is replaced by an incorrect type. Dispose of used batteries according to the instructions.

---

## Battery Charger Status Indicators

Your Pebble-mini has two small indicator LEDs located on the upper left side of the unit. The LEDs indicate the current power state and charge status of the battery (See Figure 1).

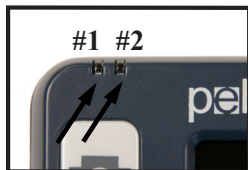


Figure 1

Refer to the table below for more information regarding the meaning of each indicator LEDs:

Blue (#1)	Amber (#2)	Description
<i>On</i>	<i>Flashing</i>	Power is plugged and battery is charging
<i>On</i>	<i>On</i>	Power is plugged and battery is fully charged
<i>Off</i>	<i>On</i>	Battery operated: Battery condition is good
<i>Off</i>	<i>Flashing</i>	Battery operated: Battery condition is low
<i>Flashing</i>	<i>Off</i>	Unit is in Standby mode
<i>Off</i>	<i>Off</i>	Unit is shut off

*Note: When your Pebble-mini battery is getting low approximately 15 minutes before shutdown the battery icon will flash three times in 5 minute intervals. A “ding” will sound when the battery icon is displayed the first time. If battery is nearly empty and ready to shut down, the battery icon shall stay flashing on screen until shut down, you will hear an audible “ding” before shut down.*

*\*The user assumes full responsibility for charging battery in any other charger different than Pebble-mini’s built-in charger.*



---

## Attaching the Neck Strap

For added security, your Pebble-mini includes a neck strap that can be attached. When using the Pebble-mini in a portable setting, the included neck strap will help to prevent your Pebble-mini from accidentally being dropped on the floor or other hard surface. Use the following procedure to attach the neck strap (lanyard):

- 1) Locate the neck strap included inside the package of your Pebble-mini (See *Figure 1*)
- 2) Feed the small loop through the hole located on the corner of the Pebble-mini. (See *Figure 2*)
- 3) Thread the neck strap through the loop to securely attach the lanyard to the Pebble-mini.



*Figure 1*



*Figure 2*

## Using the Carrying Case

For added protection, your Pebble-mini includes a convenient carrying case (See *Figure 3*). This helps to protect your Pebble-mini from accidental damage when “on-the-go”. When not using the Pebble-mini, return it to the case for added protection.



*Figure 3*

---

## TROUBLESHOOTING

---

- **No power to the unit**
  - *Can you power the unit using the included AC adaptor? (page 10)*
  - *Is the power supply properly connected to a surge protector or AC outlet (mains)? (page 10)*
  - *Is the correct battery being used and does it need to be charged or replaced? (page 22-23)*
  - *Is the battery inserted correctly? (page 23)*
- **Video image on LCD is blurry or not clear**
  - *Clean the LCD display and/or camera lens using the included cleaning cloth.*
  - *Adjust the distance of the Pebble-mini from your reading material as needed to improve image quality (focus)*
  - *Try selecting different viewing modes to improve image quality (page 13)*
- **Video image on LCD display is too bright/dark**
  - *The Pebble-mini is designed to be used in moderate lighting conditions, preferably indoors. Bright lighting (or direct sunlight) may produce shadows and/or reduce visibility. Try moving to a more shaded area to improve image quality.*
  - *Adjust the distance of the Pebble-mini from your reading material.*
  - *Try selecting different viewing modes to improve image quality (page 13)*
  - *Try adjusting the LCD brightness manually using the procedure described (page 16).*

---

- **Battery will not charge**

- *Can you power the unit using the included AC adaptor? (pages 10)*
- *Is the power supply properly connected to a surge protector or AC outlet (mains)? (page 11)*
- *Is the correct battery being used and does it need to be charged or replaced? (page 22-23)*
- *Is the battery inserted correctly? (page 23)*
- *Are you using the correct rechargeable battery? (page 22)*

- **Unit turns off automatically**

- *To conserve power, your Pebble-mini will automatically turn off the LCD after 3 minutes of non-use in standby mode. This is not a malfunction.*

- **Pebble-mini begins to make a “ding” sound and a battery icon is displayed on screen**

*Approximately 15 minutes before shutdown the battery icon shall be flashing three times in 5 minute intervals. A “ding” will sound when the battery icon is displayed the first time. If battery is nearly empty and ready to shut down, the battery icon shall stay flashing on screen until shut down, you will hear an audible “ding” before the unit shuts down.*

- **Unit becomes warm to the touch**

*Your Pebble-mini integrates a camera, LCD and battery charging unit inside a very small package, but is designed to be completely safe and does not pose a risk of fire or damage. It is normal for the Pebble-mini to become warm (sometimes, very warm) after extended periods of use.*

---

## SPECIFICATIONS

---

### Features:

- Lightweight and Portable Design
- 28 selectable viewing modes
- Levels of magnification for Pebble-mini 3.1x, 4.1x, 5.9x, 10x)
- Image “Freeze” mode
- Integrated battery charger
- Power Save mode (after 3 minutes of non-use)
- Auto shut-off (after 3 minutes in Power Save mode)

### Display:

- Type: 3” diagonal TFT display
- Resolution: 320x240 (RGB)

### Internal Micro SD card

### Physical Dimensions:

~ 113.4 mm L x 64 mm W x 19 mm H

**Weight:** 4 oz.

### Magnification Ranges:

3.1x, 4.1x, 5.9x, 10x

**Warranty:** 2 years

---

**Environment:**

- Operating Temperature : 0°C ~ 40°C
- Storage Temperature : -20°C ~ + 60°C

**Battery:**

- 3.7V/1050mAh rechargeable NP-60 battery, (installed in Pebble-mini)

*Note: The only battery recommended for use with Pebble-mini is the one provided. If your battery is no longer functioning you may order a new one from Enhanced Vision. Call 1-800-440-9476 for assistance. Battery part number is ACC-0704-00.*

**Estimated Charge Time (using rechargeable battery):**

~3.5 hours

**Estimated Usage Time (using rechargeable battery):**

(using new, fully charged 1050mAh Li-Ion battery)\*\*

~ 2.0 Hours

~ 300 charge life cycles, ≥80%

**Wall adapter:**

- UL/CE rated
- Input: 100-240VAC 50/60Hz
- Output: 5VDC, 1.0A max load

*\*To prevent condensation, do not use the unit for 1 hour after transporting the unit from extreme cold to room temperature.*

*\*\*All times listed are approximate. Actual charging and usage times may vary depending on the life cycle remaining on the battery, type and current rating of battery used, LCD brightness setting, and other variable factors.*

*In the interest of continuous product improvement, specifications and/or minimum system requirements are subject to change without prior notice.*

### **Enhanced Vision Pebble-mini Warranty Policy**

Enhanced Vision products are designed to give you the highest quality image, convenient features, ease of use and reliable service. The Pebble-mini has been inspected and tested prior to shipping. Enhanced Vision warrants the Pebble-mini against defects in material and workmanship under normal use for two years from the date of original purchase. Enhanced Vision, at its option, will at no charge either repair the product or replace it during the warranty period. There are no other expressed or implied warranties accompanying this product.

This warranty policy does not cover:

- a) Defects or damage from misuse, use in other than normal and customary manner, accident or neglect;
- b) Defects or damage from improper operation, maintenance, installation, adjustment, alterations or modification;
- c) Defects or damage from spills of food or liquid;
- d) All plastic surfaces and all other externally exposed parts that are scratched or damaged due to normal use;
- e) Damage due to operation of the Pebble-mini with equipment not supplied or designed by Enhanced Vision.
- f) Up to 3 dark or bright pixels that may appear on the Pebble-mini LCD. All products manufactured by Enhanced Vision meet industry standard TFT LCD technology requirements.

- 
- You must provide proof of purchase, bearing the date of purchase, in order to receive warranty service.
  - Anyone using this product does so knowingly assuming certain risks, due to the need to utilize vision enhancement devices.

## Service Process

In the event that technical support or repair service is needed, please contact your local Enhanced Vision representative or the Enhanced Vision warranty service center. If warranty service is required, please contact Enhanced Vision at (800) 440-9476 Monday through Friday, between 8 a.m. and 5 p.m. Pacific Standard Time (PST) to request a return authorization number.

**Warranty repairs will not be accepted without a valid return authorization number.**

**You may wish to keep the original product packaging in case warranty service is required. The manufacturer cannot provide packaging for warranty repairs.**

NOTE: Please completely fill out and send in the enclosed warranty registration card.

---

## OTHER ENHANCED VISION PRODUCTS

---

### Pebble



The Pebble is a handheld electronic video magnifier that you can take anywhere. Weighing less than 8 ounces, Pebble features a uniquely-designed folding handle and includes both near-viewing and table reading modes. Small enough to fit in your pocket or purse, the Pebble is the ideal companion to provide magnification, on the go. Featuring a built-in 3.5" or 4.3" LCD screen, the Pebble's Freeze-Frame feature allows you to capture any still image and adjust magnification. Up to 28 different viewing modes allow you to choose alternate color combinations based on your personal preference. Pebble can be powered using standard rechargeable batteries (included)

Magnification: 2X – 10X



### Acrobat LCD

With your choice of a built-in 19", 22" or 24" LCD, the Acrobat is a 3-in-1 video magnifier ideal for near, distance and self viewing. By rotating the camera, you can read, write, groom, and magnify images at any distance. The Acrobat LCD offers a complete system for those at work, school or home.

Magnification: 2X – 65X (19" LCD)

Magnification: 2X – 75X (22" LCD)

Magnification: 2X – 82X (24" LCD)





---

## Transformer



Transformer is the most flexible and portable solution for reading, writing and viewing magnified images at any distance. Compatible with popular magnification software and the latest Windows operating systems. Transformer's unique design is perfect for work, home or school. Weighs less than 3 pounds. Battery operated up to 4 hours. 28 custom color select modes.

Magnification 2.4X to 30X  
(based on 17" screen)



---

## Amigo



Amigo is a truly portable desktop magnifier. Optimal viewing is achieved with a tilting 6.5 inch viewing screen. Amigo provides 3.5 to 14x digital magnification and the lightest weight in its class. Amigo is battery operated and can be taken anywhere.



---

## Merlin LCD



Merlin LCD is a video magnifier that offers the greatest value and picture quality available. Boasting an ergonomic design, this flexible desktop magnifier allows you to pivot and adjust the screen for your most comfortable viewing position.

Magnification 2.4X to 85X

Merlin HD has the same advanced features as Merlin LCD only with an HD camera for even brighter and crisper images.





## DaVinci

DaVinci is a high performance desktop video magnifier (CCTV), featuring HD, text-to-speech (OCR) and a 3-in-1 camera. With HD you will experience high definition color and contrast giving you a beautiful, crystal clear picture and vibrant colors. Experience the joy of reading with our new text-to-speech feature. DaVinci will read any printed text aloud with the push of a button.

Magnification: 24" LCD: 2x (minimum) - to 80x (maximum)



## Merlin HD

Merlin HD's camera technology produces an even truer, more natural image. Easily read books and magazines, read and write letters, manage your financial records, view color photos, do crossword puzzles, and even pursue a favorite hobby.

Magnification: 22" LCD: 3.2x (minimum) to 64.7x (maximum) 24" LCD: 3.4x (minimum) to 57.8x (maximum)



## Merlin elite

### See and hear the difference!

Merlin elite is a high performance desktop video magnifier (CCTV), featuring HD and text-to-speech (OCR). High definition color and contrast provides a beautiful, crystal clear picture and vibrant colors. Merlin elite's unique design allows for a wide field of view, displaying more text on the screen.

Magnification: 2.4x - 70x



---

## NOTES

---

# **enhanced vision**

The Pebble-mini video magnifier is designed to enlarge and enhance images to improve the lives of people who have low vision. The extent to which Pebble-mini can improve the ability to see images and text depends on a person's individual condition and level of visual impairment. The Pebble-mini is not designed to restore vision, correct eye conditions or halt degenerative vision loss. An eye care professional can best determine the suitability of the Pebble-mini for a patient's specific condition. For more information, please visit [www.enhancedvision.com](http://www.enhancedvision.com).

**[www.enhancedvision.com](http://www.enhancedvision.com)**

**(800) 440-9476 (US Office, toll free)**

**(714)465-3400 (US Office)**

**+44 (0) 9442317 (UK Office)**

**Tel. + (49) 06078 911772 (DE Office)**

**Fax + (49) 06078 911774 (DE Office)**

Part # MAN-0740-00 Rev. X2.1  
December, 2012